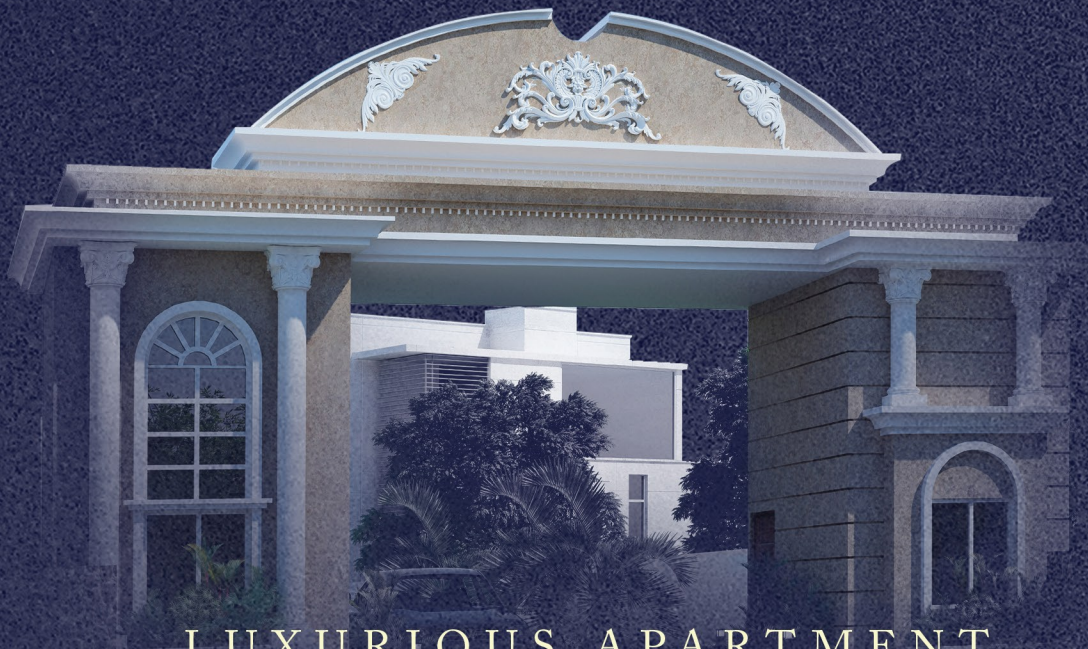




TIRUPATI

Paradise

A vision for your life & family



LUXURIOUS APARTMENT

Varanasi

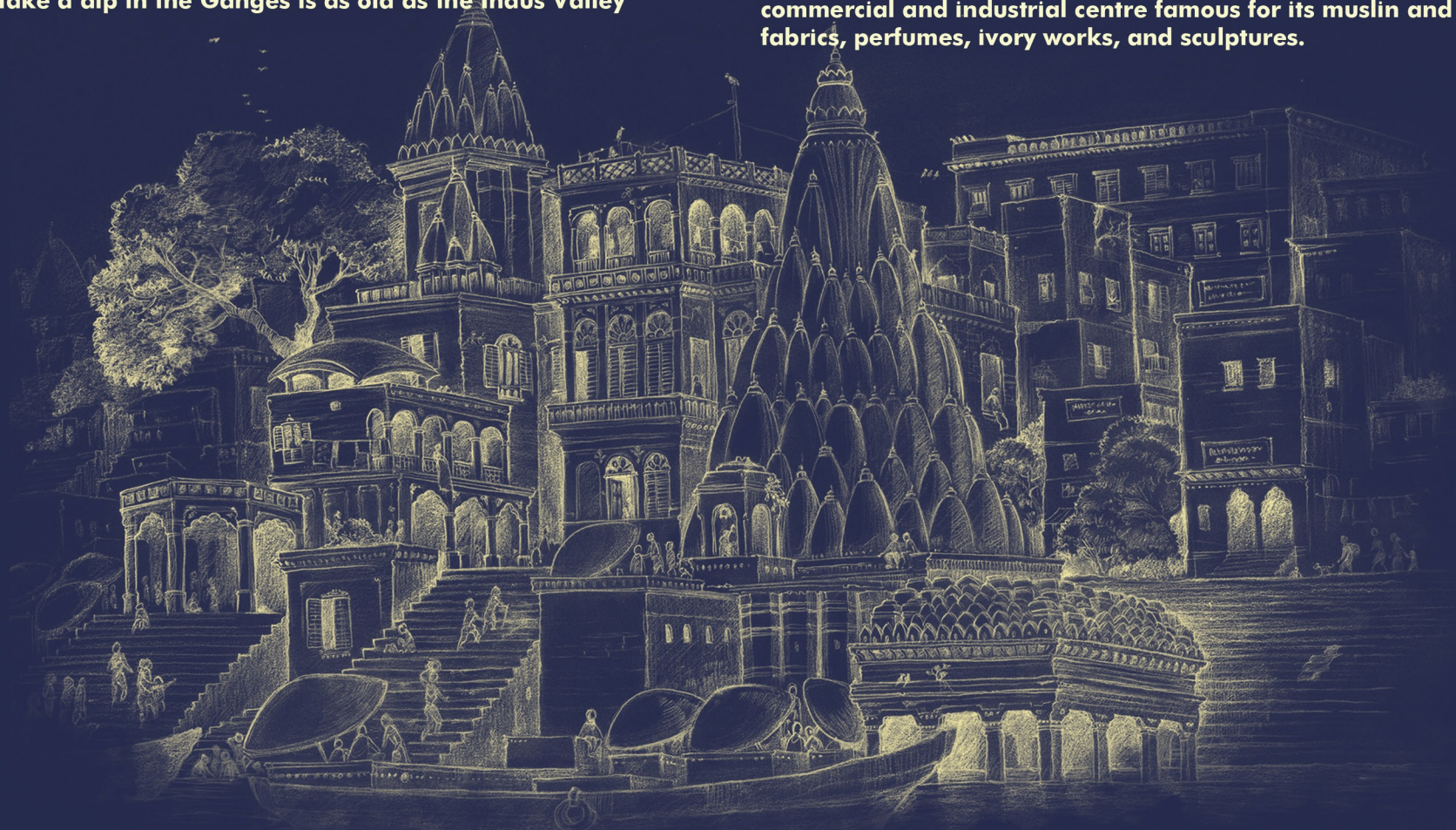
THE CITY OF LIGHT

The religious and cultural heartbeat of India can be found in the **Oldest City of India**. The holy city of Varanasi (Banaras once) that draws millions to its famous ghats every year to take a dip in the Ganges is as old as the Indus Valley

civilization. ... There was a general belief that the Varanasi stands on the "The Trishool" (also known as Trident), the weapon of the Lord Shiva.

In Varanasi, the most sacred city for Hindus, and the oldest living city in the world, dating back to 2,000 BCE. Also known as Benares, Banaras or Kashi, Varanasi is the holiest of the seven sacred cities in Hinduism.

Its early history is that of the first Aryan settlement in the middle Ganges valley. By the 2nd millennium bce, Varanasi was a seat of Aryan religion and philosophy and was also a commercial and industrial centre famous for its muslin and silk fabrics, perfumes, ivory works, and sculptures.





Building homes for people is what we have always loved to do. Tirupati Group today leads the young generation of real estate development companies in North India. We have pioneered the region with State-of-the-art development projects that have garnered international attention and interest.

We are a young and emerging group of building developers and promoters with our motto being centered on the principles of trust and respect to our clients. We take pride in emphasizing that all our projects have had an awe-inspiring record of 100% occupancy and success.

Being in the Holy City of Varanasi, we have developed dreams of our clients into realities in success as building developers and promoters, we also plan to make a strong foothold in the Real Estate market of North India. Apart from establishing business ventures in many other Real Estate Projects (*Tirupati Enclave Phase I | Tirupati Enclave Phase II | Tirupati Tower, Benipur, Akhta*) and our ongoing project **Tirupati Paradise**, we specialize in making personal bonds with our clients which is something that differentiates us from many other groups. Exceeding the expectations of our clients is something of paramount importance to us, and thus their dreams do not just remain theirs; but become ours too. We consider long term customer satisfaction as our agenda of growth and we are striving to deliver our best in the years to come.

TIRUPATI

Paradise

PAGE 2

TIRUPATI

Paradise

TOTAL NO.OF FLATS 360

Throughout history, builders have always been revered for their ability to mold the natural elements into something new, perhaps something never seen before. Building is therefore a creative act on a momentous scale.

For those lucky enough to be involved in Tirupati Pardaise Construction & Building, it's an incredible joy to be involved in bringing forth from of drawings and ideas. A structure that will stand for many lifetimes.

Tirupati Paradise comprises of finely envisioned 1bhk 2bhk 3bhk flats in State-of-the-Art apartment arranged in a harmonious layout. Built with the purpose of luxury life style. All the modern facilities and constructional requirements of a Tirupati Paradise family, Tirupati Paradise is a promise that will last for years to come.

We have always kept the importance of professional culture at the forefront of all our brand touchpoints

A vision for your life & family

TIRUPATI

Paradise







TIRUPATI

Paradise

A VISION
FOR
YOUR
LIFE
& FAMILY

*Be generous in the
bedroom.....*



TIRUPATI

Paradise



PAGE 5

OUR COMPLETED PROJECTS

Tirupati Enclave Phase I, Shivpur



Tirupati Enclave Phase II, Shivpur



Tirupati Tower, Benipur, Akhta



THE NIGHT IN

Paradise

If you want to change your life, you have to do something about it. If you're dreaming about investing in real estate.

Tirupati Paradise comprises of newly envisioned 1bhk 2bhk 3bhk flats in State-of-the-Art apartment arranged in a harmonious layout. Built with the purpose of luxury life style. All the modern facilities and constructional requirements.



TIRUPATI

Paradise





TYPES OF BLOCK

A

B

C

D

E

TIRUPATI *Paradise*





Our 2/3 rd part of
compound is open space

All construction is done
1/3 rd part of compound Area

TOTAL FLATS IN COMPOUND

360 FLATS

TOTAL FLATS IN EACH BLOCK

72 FLATS

FLAT IN EACH BLOCK
AT EACH FLOOR

6 FLATS

FLOOR IN EACH BLOCK

Basment (parking)

Stilt+12 Floors

LIFT IN EACH BLOCK

2 LIFTS

PURPOSED FOR PLOTS

FLOOR PLAN

2 BHK

EAST FACING

A
PLAN



Super Built up area:

1087.26 sqft.

FLOOR PLAN 2 BHK

EAST FACING

B PLAN



Super Built up area:

1068.80 sqft.

TIRUPATI *Paradise*

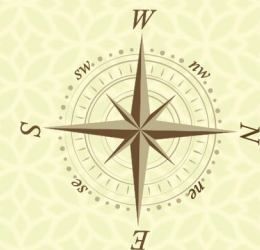
PAGE: 12

FLOOR PLAN 1 BHK

EAST FACING



C
PLAN



Super Built up area:

633.63 sqft.

FLOOR PLAN

2 BHK

WEST FACING

D

PLAN



Super Built up area:

1123.83 sqft.

TIRUPATI *Paradise*

FLOOR PLAN

3BHK

WEST FACING

E

PLAN



Super Built up area:

1618.70 sqft.

FLOOR PLAN

1 BHK

NORTH FACING

F

PLAN



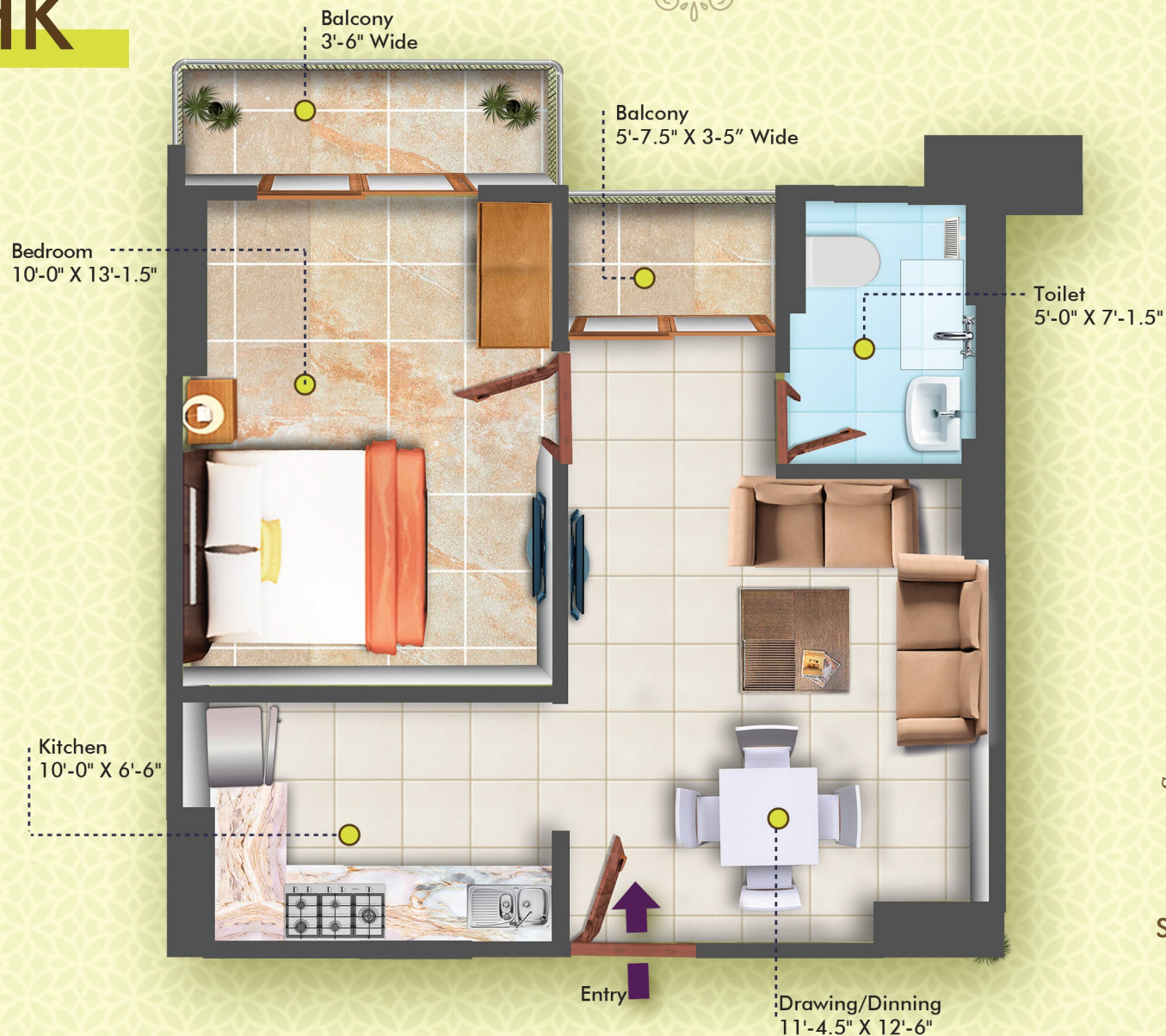
Super Built up area:
633.03 sqft.

TIRUPATI *Paradise*

FLOOR PLAN 1 BHK

EAST FACING

G
PLAN



Super Built up area:

653.48 sqft.

FLOOR PLAN

1 BHK

EAST FACING

H

PLAN



TIRUPATI *Paradise*

FLOOR PLAN

2 BHK

WEST FACING

PLAN



Super Built up area:

1179.02 sqft.

TIRUPATI *Paradise*

FLOOR PLAN

3BHK

WEST FACING

J

PLAN



Super Built up area:

1629.91 sqft.

FLOOR PLAN

3BHK

WEST FACING

K

PLAN



FLOOR PLAN

3BHK

WEST FACING

L
PLAN



Super Built up area:

1571.49 sqft.

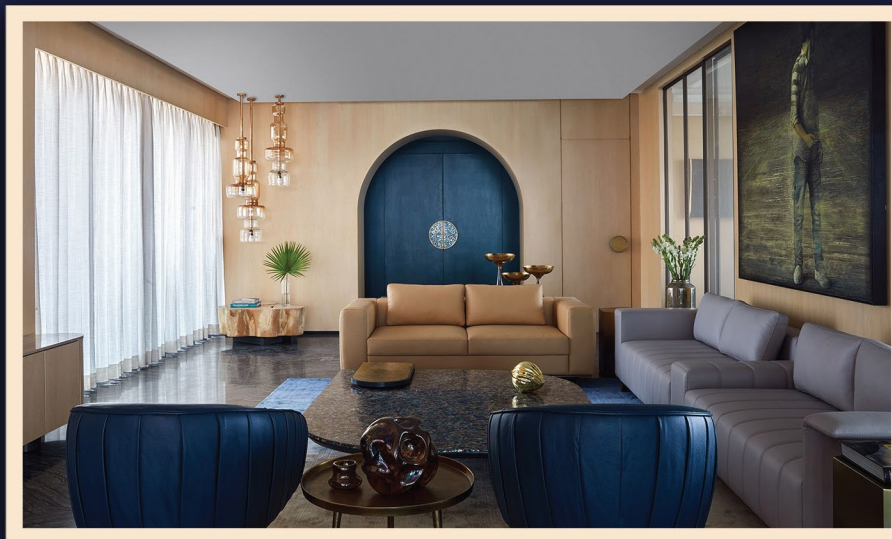


Club Houses

TIRUPATI *Paradise*



Make your
Own 
Luxury



Specifiaction

LIVING / DINING/ LOBBY

Floor	32"x32" vitrified tiles
Walls	POP base with OBD finish
Ceiling	POP base with OBD finish

BED ROOM

Floor	2'x2' vitrified tiles
Walls	POP base with OBD finish
Ceiling	POP base with OBD finish

KITCHEN

Floor	Ceramic tiles
Walls	Ceramic tiles dado upto 2' above counter
Counter	Granite top
CP Fittings / fixture	Jaguar/equivalent, stainless steel sink, exhaust, mixer, grinder, water purifier electrical points etc.

TOILET

Floor	Anti skid ceramic tiles
Walls	Ceramic tiles dado up to 7' height
CP fittings / Fixture	Jaguar / equivalent
Sanitary ware	Good quality ISI marked sanitary fittings POP base with OBD finish

BALCONY

Floor	Anti skid ceramic tiles
Walls	Weather coat paint
Ceiling	POP base with OBD finish

DOOR

All door hard wood frame work, and good quality flush door finish with laminate.

WINDOW

UPVC Sliding Windows

ELECTRIC WORK

Copper wire, modular switches & sockets of ISI marked AC point with wiring in drawing, bed rooms

UTILITY

Provision for washing machine and utensil washing.

STRUCTURE

Earthquake resistant RCC framed structure, designed by qualified structural engineer.

LIFT

For Five Persons only

STAIRS

SS railing with SS Handrail, Granit flooring

Total Carpet Area

PLAN A 643.23 sqft.

PLAN B 636.58 sqft.

PLAN C 412.29 sqft.

PLAN D 678.51 sqft.

PLAN E 1000.11 sqft.

PLAN F 363.72 sqft.

PLAN G 408.42 sqft.

PLAN H 438.36 sqft.

PLAN I 678.51 sqft.

PLAN J 1007.42 sqft.

PLAN K 1000.11 sqft.

PLAN L 1007.42 sqft.

Highlights

-  CCTV at Entrance
-  Swimming Pool
-  Flood Free Zone
-  Health Club, Gym
-  Jogging Track
-  Economical Flats
-  24x7 Security & Power Backup
-  Lift
-  Provisions for Rain Water Harvesting
-  Landscape Garden
-  Kids Play Area

LOCATION ADVANTAGES

Strategically located, "Tirupati Paradise" is the ideal spot of connectivity in the rapidly developing canvas of Varanasi.

✦ AIRPORT APPROXIMATE DISTANCE	18.00 KM
✦ BADA LALPUR STADIUM APP.	01.10 KM
✦ HOSPITAL ANIMETIES	03.10 KM
✦ SARNATH HERITAGE PLACE & ZOO APP.	15.60 KM
✦ RING ROAD	500. MTR
✦ RAIL WAY STATION CANTT.	08.90 KM
✦ POLICE STATION APP	900 MTR

Location Map





TIRUPATI

Paradise

SITE ADDRESS -

Arazi No -581,582 Near
Christian
Bangala, Dandupur, Christ
Nagar (Chandmari) Varanasi -



CONTACT FOR BOOKING

Contact: 9519171792
www.valuablerealty.in

REGISTERED OFFICE

C,27/274-A-A1,101,1st Floor, Jai
Singh Building -2 Maldhiya, Varanasi -
221002

ARCHITECTURAL CONSULTANT

Ajay Singh
Design center
PCF, Plaza, Varanasi
+91-9415301562

7/2 Sarvapriya Vihar, Rear
Basement, New Delhi 110016

Beniwal Associates Pvt. Ltd.
Structural Engineers & Architects

+91 73092 78994, 7985435950
ractiveproductions@gmail.com



DESIGN &
PRINT BY :